

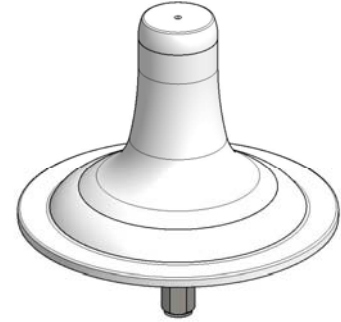
# GSM Omni Antenna

870~960 MHz / 02 dBi


## GSM-IDT-02

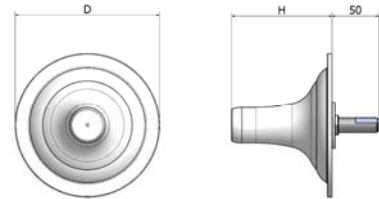
### i. Electrical Specification

Frequency Range	870~960MHz	
Polarization	Vertical	
Band Width	90 MHz	
Gain	≥ 2 dBi	
Beam width	Horizontal	≥ Nominal 360 °
	Vertical	-
F-B ratio	-	
VSWR	≤ 1 : 2	
Impedance	50 Ω	
IMD (2x20W)	-	
Maximum input power	5W	

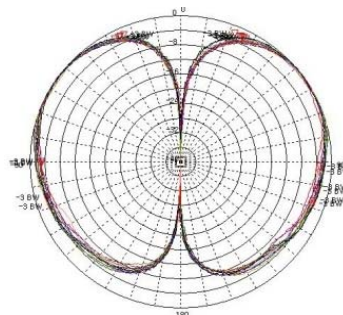


### ii. Mechanical Specification

Radom Dimension ( D x H )	Ø175 × 115 mm
Weight	360 g
Connector Type	N-J (Female)
Withstand Wind Pressure	60 m/sec
Radome Material	ABS
Radome Color	 Cool Gray 1C
Temperature	-40 °C ~ 70 °C
Packing Size (H x W x D) 50SET	-
Packing Weight 50SET	-



### iii. Radiation Pattern



Vertical Pattern